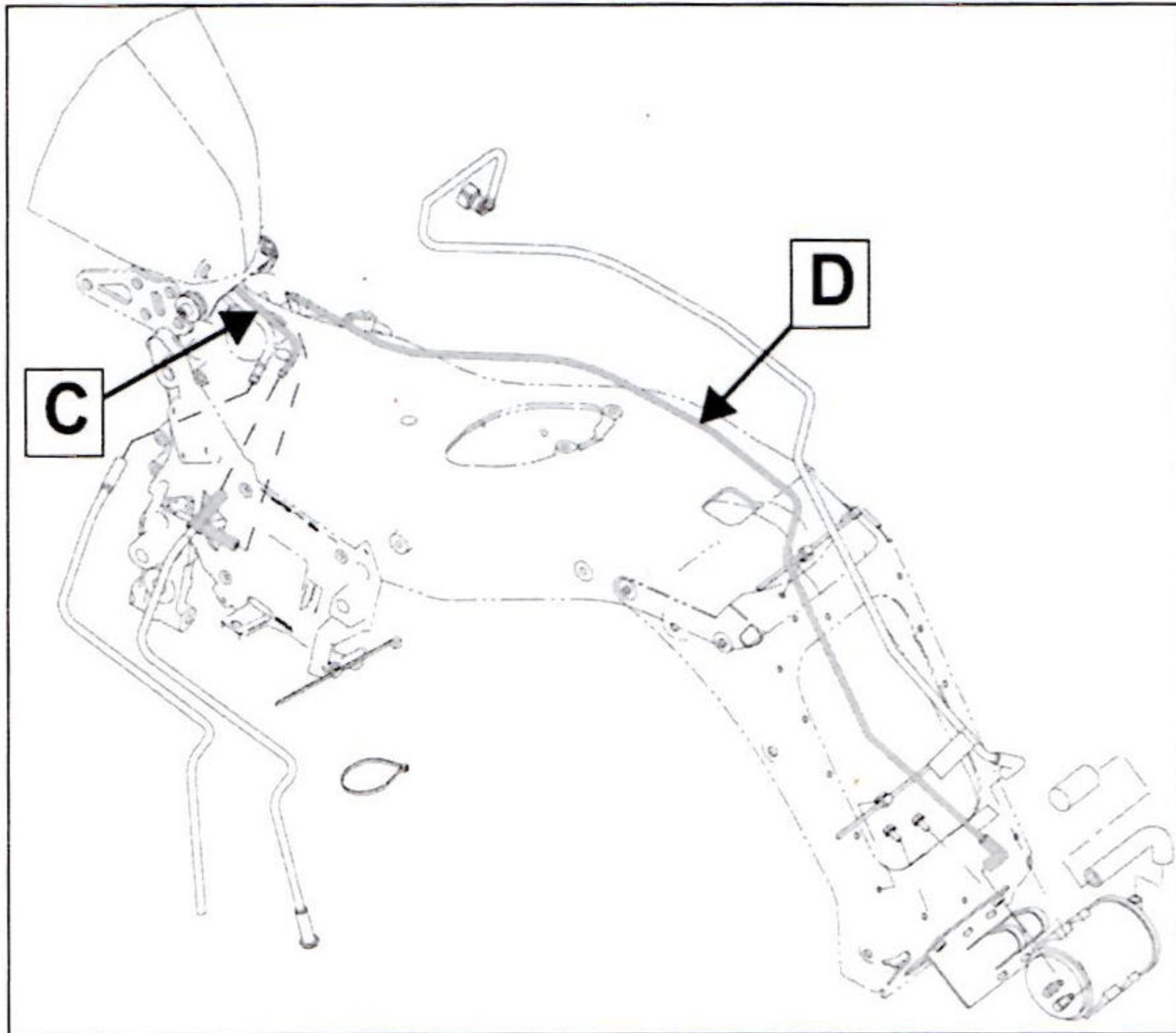
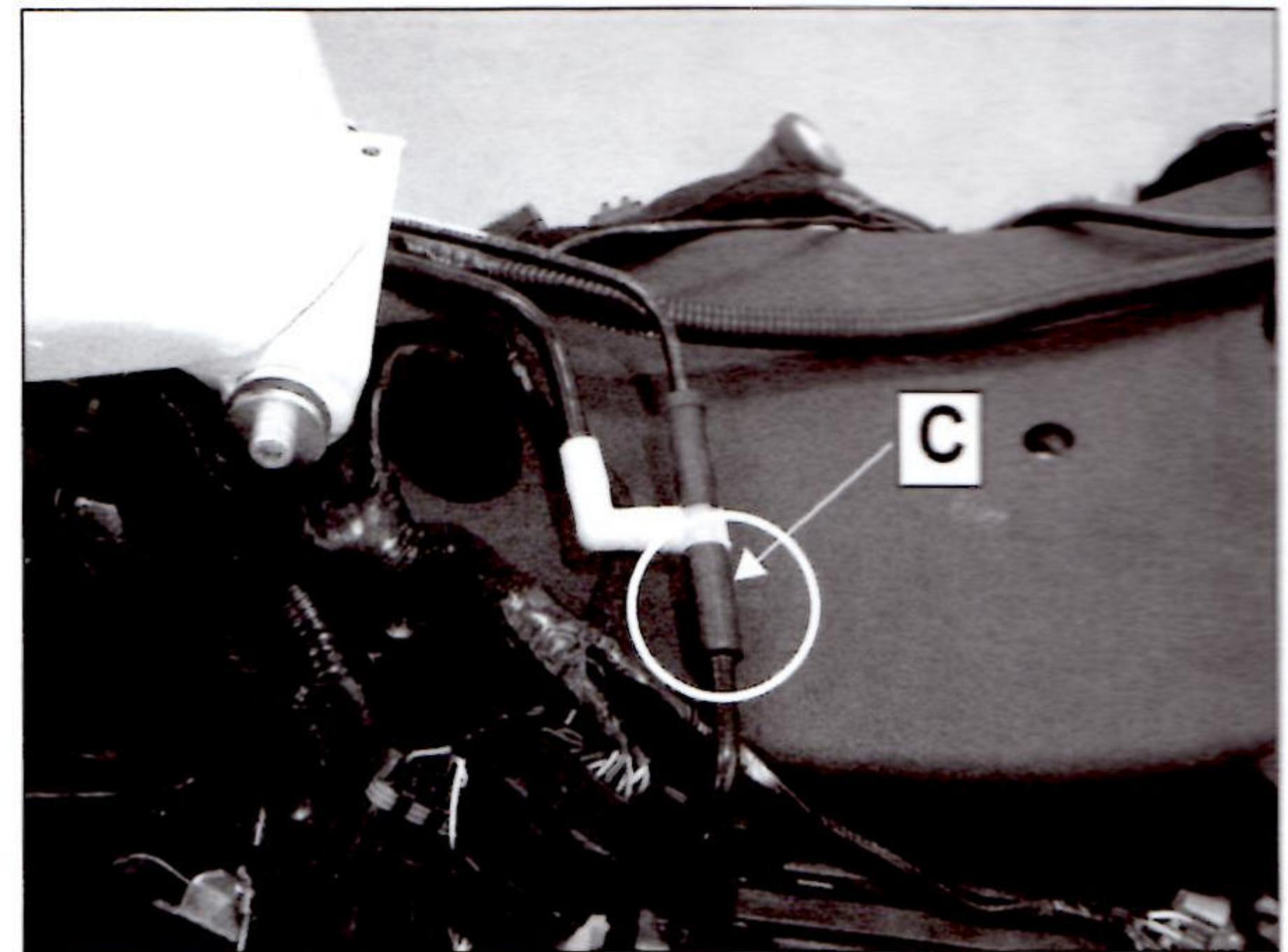


FUEL TANK VENT INSPECTION - California

1. Disconnect vent hose (C) under seat.
2. Be sure both hoses (C, to tank) and (D, to EVAP canister) are unobstructed.

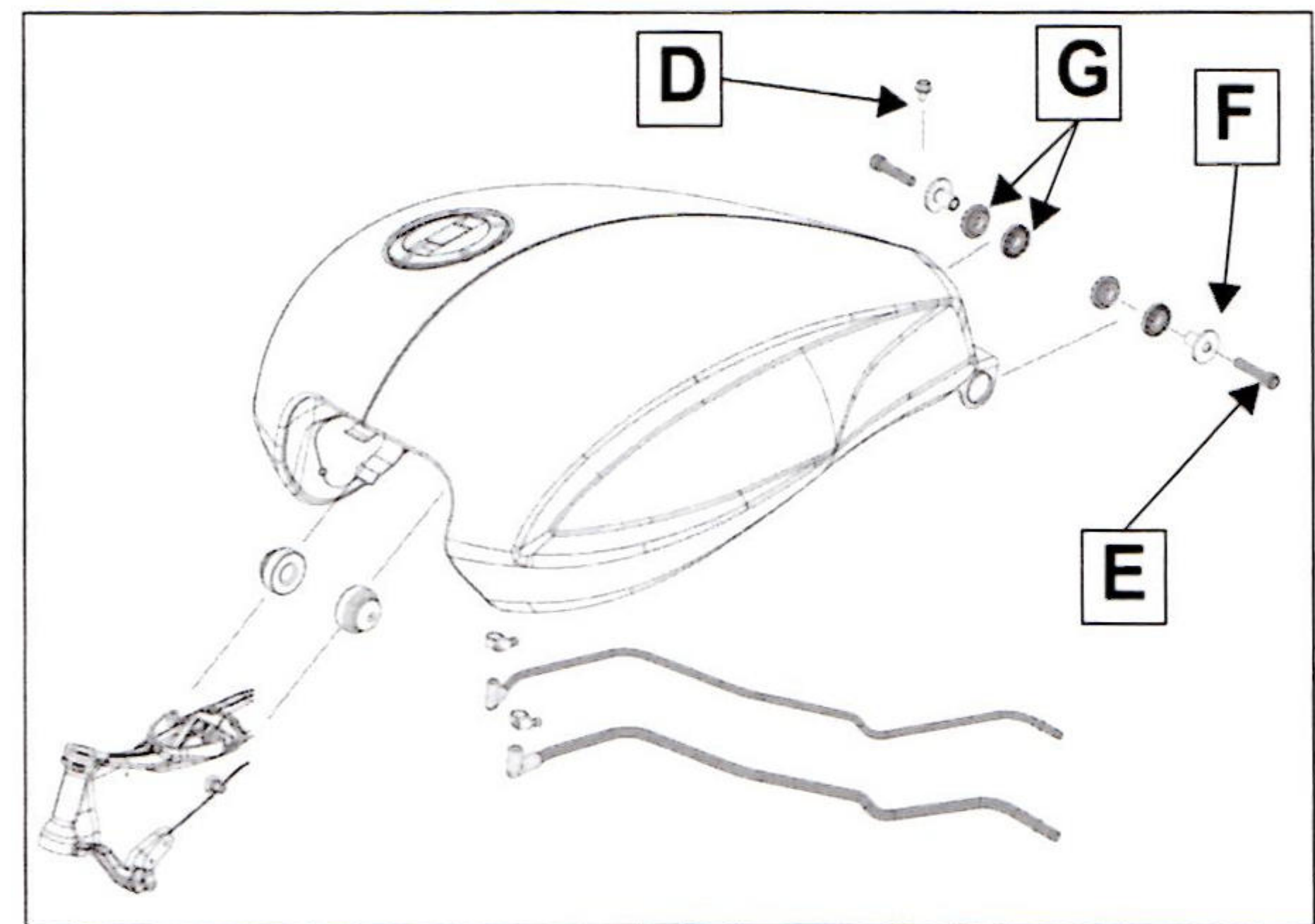


2. Disconnect vent line and water drain lines (C).



5

3. Remove ground wire bolt (D) and rear tank bolts (E) and collect flange bushings (F) and isolators (G).

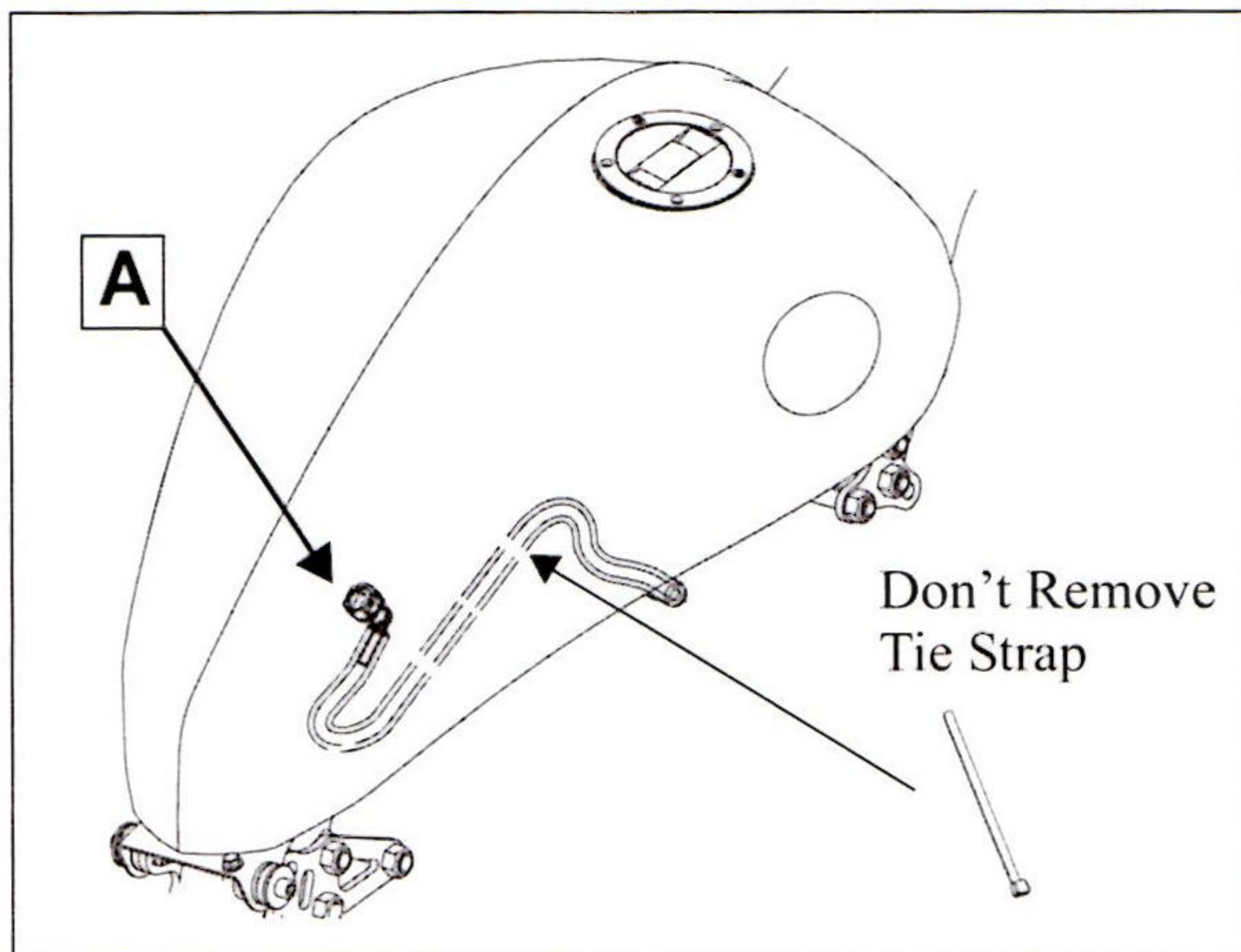


FUEL TANK REMOVAL

⚠ WARNING

Review gasoline warnings on page 5.3. Allow engine and exhaust to cool completely before disconnecting fuels line or removing tank.

NOTE: The fuel line is secured to the main wiring harness by a tie strap. The fuel line must be disconnected from the fuel pump fitting (A) before removing the tank. Do not cut or remove tie strap.



4. Secure handlebars in the straight ahead position. Place a protective cloth on front of tank to prevent damage.
5. Pivot rear of tank up to gain access to fuel line/fuel fitting. Support rear of tank.

1. Remove side covers and seat (Chapter 3).

